

# PROLOG ▶ Mobile



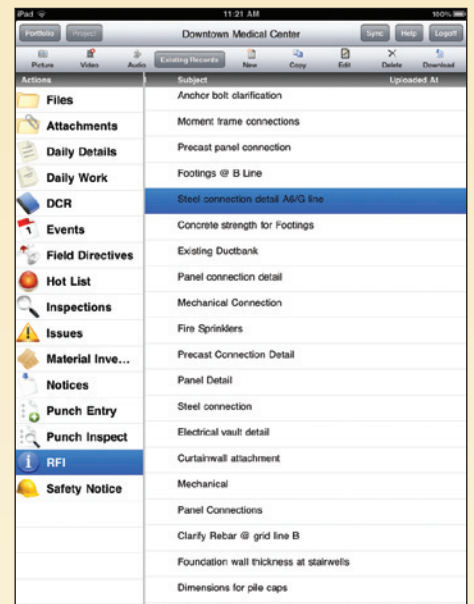
## Prolog Mobile: Bringing Prolog Project Management to the Field

Prolog Mobile brings you the power of Prolog right where construction actually happens— in the field. Natively built for mobile devices, Prolog Mobile lets you access and capture critical Prolog project information straight from your iPad or Windows Mobile device. Prolog Mobile is a field tool which empowers field staff to leverage the features of Prolog construction project management software without any special integration.

Prolog Mobile enables field staff to view current project information and to manage construction oversight activities, with or without an internet connection. Data is collected in real time from the field and synchronized with Prolog back in the office, creating a complete system of record for all project data.

Prolog Mobile extends Prolog in the following areas:

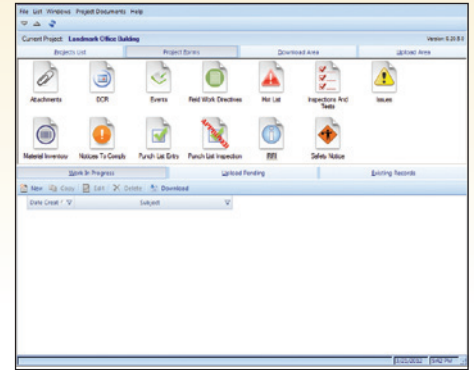
Feature	Advantage	iPad	Windows Mobile
Daily Construction Reports	Record daily construction activities, weather and general conditions for each project	✓	✓
Punch List Tracking	Reduce time required to complete a punch list	✓	✓
RFIs	Reduce response time and impact on project schedule	✓	✓
Safety Notices	Reduce safety violations and accidents through safety management	✓	✓
Inspections and Tests	Verify compliance with required inspections and tests	✓	✓
Events	Track production and milestone events	✓	✓
Field Work Directives	Reduce risk of surprise changes (for authorized work)	✓	✓
Hot Lists	Track follow-up items	✓	✓
Issues	Create an issue history to record all information related to specific issues	✓	✓
Notices to Comply	Increase quality control on a project	✓	✓
Document Viewing	Full access to the Prolog Document Management System	✓	✓
Material Inventory	Document all deliveries and associated inventory	✓	✓



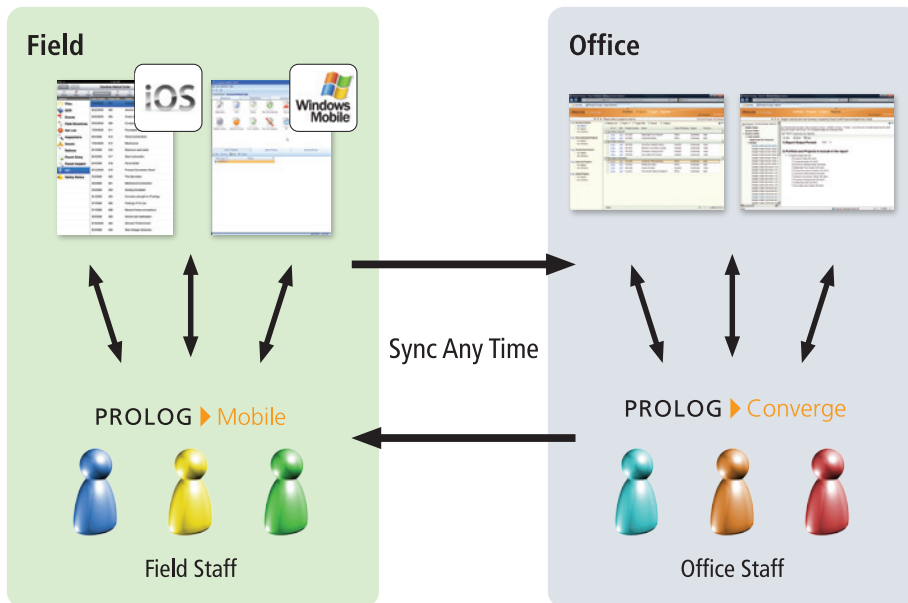
Capture critical project data in the field including safety notices, RFIs, Punch Lists and more.

## Prolog Mobile Features

Feature	iPad	Windows Mobile
Work With or Without an Internet Connection	✓	✓
Device Specific Licensing	✓	✓
Store and View Documents in Prolog's File Management System	✓	✓
Capture photo, audio, video	✓	✓
Annotate photos and documents	✓	✓
Works seamlessly with any Prolog client	✓	✓
Supports Prolog Project and Form security	✓	✓
Trigger and receive notifications	✓	✓
Option to synchronize latest document revisions only	✓	✓
Data is synchronized and stored directly in Prolog database	✓	✓
Prolog Nomenclature support	✓	✓
Upload multimedia and store into Prolog File Management without attaching to a Prolog record	✓	✓



Prolog Mobile works seamlessly with Prolog Manager or Prolog Converge.



### System requirements

**Windows Mobile:** Windows 7

**iPad\*:** iOS 4.3 or later

**Prolog:** Prolog Converge 9.2 with Hotfixes

\* iPad 1 - Photo and Video requires integrated camera



1720 Prairie City Road  
Suite 120  
Folsom, California  
95630  
USA

(916) 294 2000  
(916) 294 2001 fax  
(800) 850 2660  
www.meridiansystems.com  
sales@meridiansystems.com

© Copyright 2012 Meridian Systems. All rights reserved. Prolog and Meridian Systems are registered trademarks of Meridian Systems, an independent subsidiary of Trimble, in the United States and other countries. The names and logos of other companies mentioned herein may be trademarks of their respective owners. This document is for informational purposes only. Meridian Systems makes no warranties, expressed or implied, in this document.